



COX Design Universally accessible Superloo

Colours



Light grey
JCD 7006



Chain Metal Grey
JCD 7002

Any other colour chosen by the city

Thorough cleaning after every use

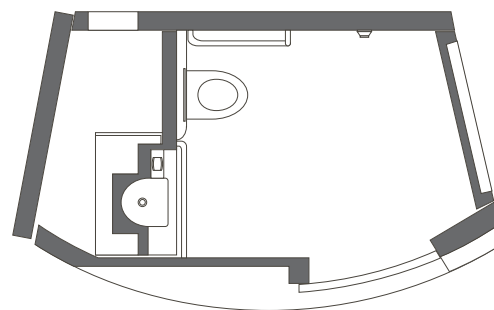
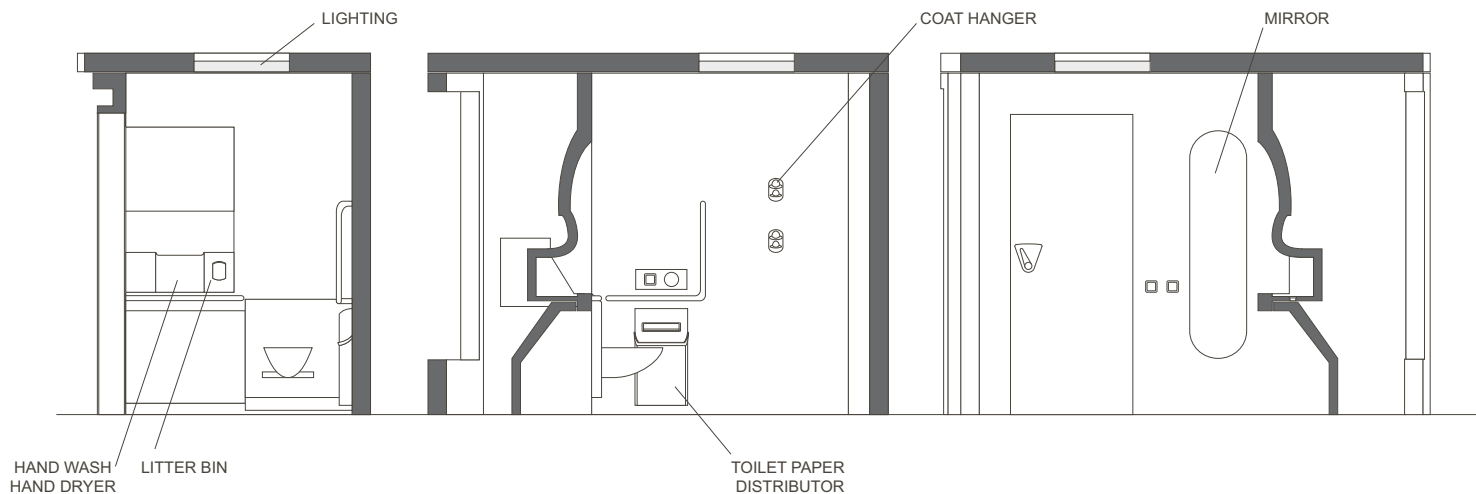
High comfort level

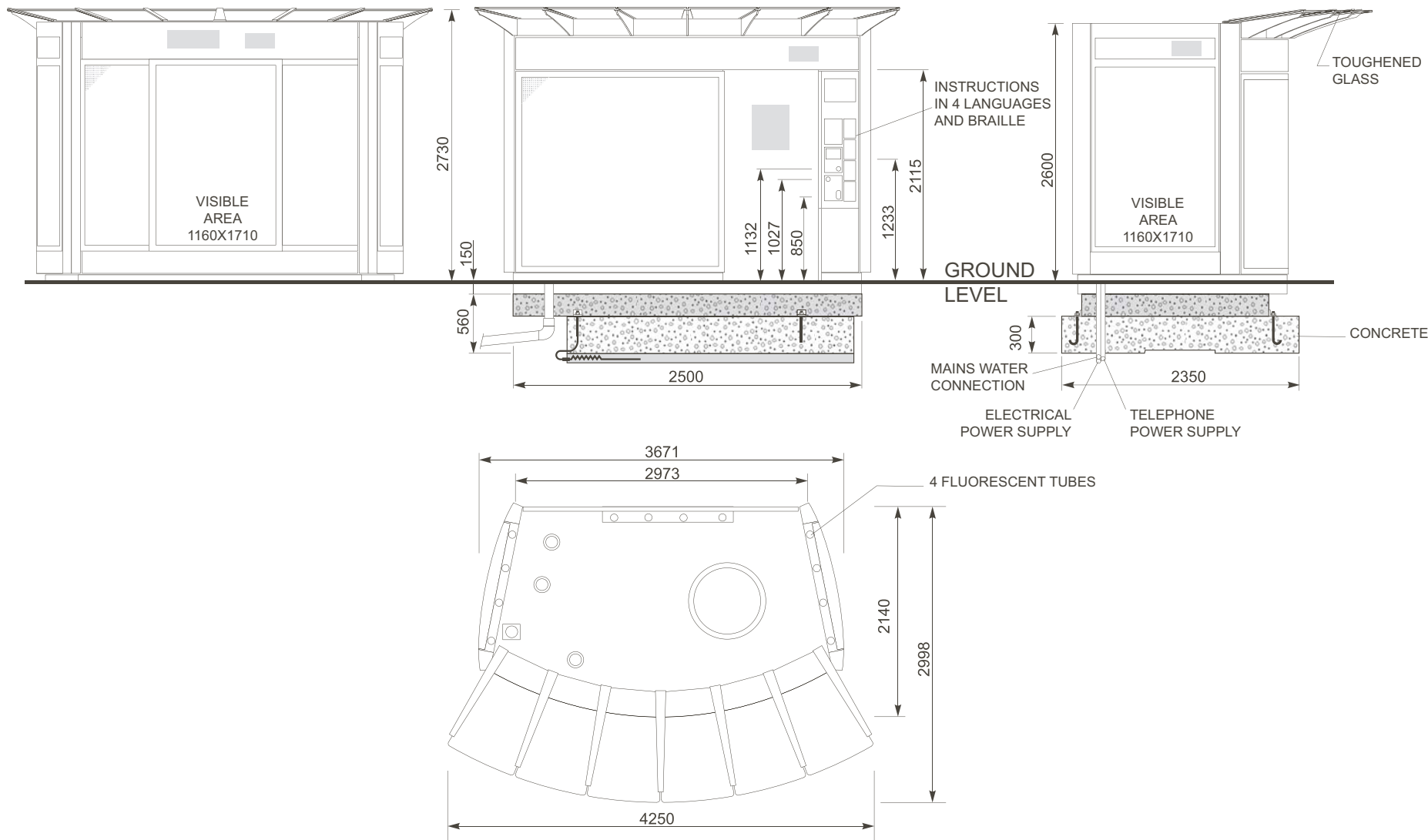
A robust toilet, providing full user safety

High reliability via constant monitoring of all possible anomalies

A toilet accessible to all

Inside views





General description

STRUCTURE

Pre-fabricated concrete mono-bloc shell with cast fixings to receive equipment and separated into two independent volumes.

The public area

The technical area

Decorative external cladding

Transparent glass canopy to protect users from bad weather conditions on the front of the toilet

Equipped with a lighting system composed of 6 bulbs above the public access door and under the glass canopy

Toilet sign above the door visible from far distances

Fitted with three 2m² advertising cases

Fire resistance to class M0

PUBLIC AREA

Smooth concrete walls treated with an anti-graffiti varnish

Non-slip floor washed after every use

User information plates on all equipment

Adapted to the needs of disabled persons

Presence detection system

ACCESS TO THE PUBLIC

by:

• COINER

Coins accepted 0.05 €, 0.10 €, 0.20 € and 0.50 € or tokens

Automatic return of rejected coins

Cash box accessible from the outside after opening a secure door

Secure opening of the cash box door using an infra-red key

Or by adding an option

• PREPAID CARD

Card reader integrated near the coiner on the toilet

Possibility to define the accessibility using a programmable clock

User entries are counted automatically

PUBLIC AREA DOOR

Via sliding door to maximise use of space

Electric motor driven automatic operation

Double skin door of anti finger pinch design

Embossed surface to discourage fly-posting

BOWL

Traditionally shaped enamelled porcelain bowl washed after every use

TECHNICAL AREA

Houses all mechanics and the electrical cabinet

Accessible only to maintenance technicians

Fitted with mains supply connection box

ACCESS TO TECHNICAL AREA

Via a door with a 2 point automatic locking system

Opened by infrared remote control

SIGNS

Information panel fitted on the toilet beside the public access door

Display:

- Fitted with an availability indicator display (LCD)
- Instructions for use silkscreen printed on a backlit panel

INFORMATION PANELS

Flush mounted on both lateral sides and on the rear

Visible display area 2m²

Backlit with 4 fluorescent tubes, for uniform lighting

Posters held by clips or a fold on a support rail

Materials

MATERIALS	ANTI-CORROSION PROTECTION	FINISH	MAIN PARTS
Concrete		Inside polished and anti-graffiti lacquer	Shell structure and hand wash
steel	Galvanisation	Polyester powdercoat 80µm	Front consoles & canopy support arms
Decorative aluminium type "Gantois"	Chromate conversion	Polyester powdercoat 80µm	Outer décor claddings
Stainless steel "Rigifoil"	Passivation		Inside face of the public access door
Stainless steel	Passivation	Mirror polished	Pull down & support bars Fixings Part of the wash mechanics
Cast aluminium	Anodisation Chromate conversion	Polyester powdercoat 80µm, brushed	Coiner door, bowl door, toilet paper dispenser, litter bin door
Extruded aluminium	Chromate conversion	Polyester powdercoat 80µm	Toilet floor, adcase doors
Porcelaine		Enamel	Toilet bowl
Toughened laminated glass 8mm			Canopy, skydome
Toughened glazing 8mm		Glass border	Glazing for advertising cases

Operation

Introduction of the means of payment

Automatic opening of the door

Display of "toilet occupied"

Closing and automatic locking of the door after detection of presence in the public area or after 15 seconds

After use, opening by push button

Closing and automatic locking of the door after confirmation that unit is unoccupied

Automatic washing of the bowl and floor

Display of "toilet ready" for next use

Water

125mm diameter sewage connection

3/4 " mains water supply connection

Consumption = 600 litres / day based on 50 uses per day

Mains supply protected from any risk of bacterial contamination by air gap

Automatic frost protection drain down

Non return valve required in waste line to prevent return from sewer

Average consumption = 560 litres / per day (based on 50 entries per day)

Electricity

Connection to the permanent mains electricity supply

Residual current circuit protection device 30mA

Installed Power rating = 9.75 kVA

Consumption = 26,78 kWh / day based on 50 uses per day

Standards

ELECTRICITY
NFC 15-100
EC machines / EMC / low voltage DirectivesME

MECHANICAL
NFP 99-611: public toilets specification and testing
FDP 92-507: fire safety
NFP 91-201: constructions for disabled persons
D11 201: Washbasins, fitting to cater for the needs of handicapped persons

Design and construction to ISO 9001 (2000 Version)

Protection against vandalism

Opening of the display panels is via a special key.

Glazed with 8mm toughened glass.

The aluminium access door panel is embossed to discourage fly-posting.

No visible fixings.

Inside and outside practically indestructible concrete, further protected inside with an anti-graffiti lacquer.

Surface mounted fixtures firmly anchored in the concrete to prevent being torn out.

No risk of degradation due to fire through use of MØ class materials throughout

Secure access to technical area via infra-red remote control

Unbreakable mirror.

High performance cleaning

BOWL

Patented wash system

Pneumatic powered bowl tilting

Thorough cleaning of the bowl inside, seat and back-plate by pressurised water jets

Addition of detergent and anti-bacterial product in the wash water

Addition of anti-wetting agent to avoid wash water remaining on the bowl

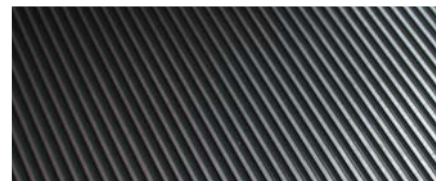
Wash system invisible from the public area



FLOOR

The floor is simultaneously washed and tilted to ensure full removal of detritus

Floor grooves improve litter removal efficiency



Maintenance

Continuous monitoring of components and status display on the PLC (programmable logic controller)

Accessible via hand-held maintenance terminal

Main faults detected:

- Movement and washing of bowl
- Presence detection
- Water system
- Door operation

User hygiene

Bowl, is washed, disinfected and dried after each use

Floor cleaned by pressure water jets after each use

Paper dispenser (2000 sheets approx)

Automatic hand wash, soap and dry

Forced ventilation of the public area, eliminating all unpleasant odours

User comfort

Coat hanger

Mirror

Litterbin

Support bars

Heating element incorporated into the air for constant temperature in the public area

Natural through translucent panels

Artificial via a ceiling light, including emergency back-up lamp

Automatic opening and closing of the public door

Selected high quality materials used

Cleaning of bowl and floor after every use

Complete removal of all deposits or miscellaneous items after each use

Optimised use of space to provide the highest levels of user comfort

Separate service and public areas

A toilet facility maintained in perfect working order via real time condition monitoring

User safety

- Automatic closing of the door when presence detected pressure limited door closer to avoid risk of finger entrapment
- Detection of user presence by presence detectors
- Initialisation of the cleaning cycle disabled when 4KG or more detected on the public area floor
- Initialisation of the cleaning cycle is disabled if there is a weight greater than 3kgs detected on the bowl
- Manual door opening in case of mains power failure
- Audible warning of automatic door opening in the event of occupation exceeding fifteen minutes (adjustable)
- Smooth continuous surfaces eliminating possibility of hiding objects
- Access for emergency services from outside
- No visible electrical equipment
- No visible fixings
- Non-slip floor
- Non-flammable materials used throughout

Accessibility for all

- Sliding automatic door to ease access for people in wheelchairs
- User information in 4 languages and Braille
- The height of the step less than 15mm for wheelchair access
- Two coat hangers situated at 1.10m & 1.60m
- A long mirror fixed a few centimetres above the ground
- A manoeuvring diameter of 1.50m for wheelchairs
- Pull down and fix support bars on the walls
- A hand wash basin allowing wheelchair access
- Public door opening using a kick push button near the floor

Remote transmission

- Remote transmission of breakdowns by radio to the local JCDecaux maintenance depot.
- Communication of the information to the maintenance technicians in real-time allowing them to make fast and efficient repairs.

Anti-bacterien

- Traditionally shaped enamelled porcelain bowl guarantees total elimination of germs after cleaning, contrary to polyethylene bowls following studies.